

Editor: Kay Reinke [kayreinke@gmail.com](mailto:kayreinke@gmail.com)

February, 2014

239 W. San Antonio St.  
New Braunfels, TX 78130  
830-629-8022

Website:

[www.newbraunfelsartleague.com](http://www.newbraunfelsartleague.com)

## February Artist of the Month

### Bob Cook

#### **NBAL 2014 Board**

**President** – Barbara  
Blaschke

**1st Vice President** – Tom  
Bender

**2nd Vice President** – Mary  
Hammond

**Treasurer** -- Flo Biggs

**Asst. Treasurer** – Lynn  
Gabenski

**Secretary** – Arlene Rhodes

**Parliamentarian** – Vickie  
Smith

**Past President** – Robin  
Roberts Walker

**President Emeritus** -- Elaine  
Felder

I'm a full time artist working in different media.

In painting, I use oils, pastel, watercolor and occasionally acrylics. I paint a range of subjects and sizes and I also vary textures from heavy impasto to highly blended treatments. I think of myself as mainly a tonal painter (emphasis on light/dark values) as opposed to being a colorist. In fine art photography, I enjoy the technical side of photography (night shots, infrared conversion) but I do keep to the concept that photographs need to look like photographs as opposed to "digital art," where photoshop has run wild. I find, however, that in my work, painting and photography feel like they are converging as similar artistic "rules; decisions and concepts are employed to create the final piece in either medium. I've had college training in art at Texas State but I've benefited more by being in a community of artists in the Texas Hill Country and by having studied with numerous instructors in workshops. In addition to my membership in the New Braunfels Art League, I'm a past President of the Wimberley Valley Art League and a member of the River Art Group in San Antonio. My work is also shown in a number of commercial galleries in Central Texas.

Being an artist is the best job in the world.



#### **Members!**

If you are not reading this from your computer, you are missing out on pages 3 and 4. There is much information and news on those two pages! Everything is in color, including photos!

**Check out** our new NBAL logo at the top of the page. It will also be included in the banner on our web page! The logo emphasizes "New Art" embedded in the wording "New Braunfels Art League."

## February Meeting (Postponed from January meeting)

We will have a great opportunity at our February 18<sup>th</sup> meeting. Every member will have an input to the future of NBAL. There will be a strategic planning session to set goals for the Gallery and the League. Carolyn Pittman will facilitate the discussion. The members present will be put into groups and go through a brain storming session. Similar ideas will be grouped together and then each member will help identify priorities. The information will be put together and presented to the Executive Board, Team Board and then presented as a strategic plan to the general membership. We encourage members to attend the meeting and give their valuable input as the NBAL moves forward.

## 2014 Classes at NBAL

**Angie Banta Brown, Watercolor**, Wednesdays from 9:00am to 12:00pm. **Oil Painting**, Thursdays, from 9:00am to 1:00pm. Call 830-609-2581.

**Linda C. Jacobson, Children's Art Classes** (ages 5 -13), in painting, drawing and other mediums, Call 830-624-5302 or visit online at [www.casadelinda.com](http://www.casadelinda.com) for a complete schedule.

**Anne McCoy, Watercolor**, Mondays from 6:00pm to 8:30pm Call 830-629-6836.

**Julie McCollum, Experimental Painting**, 4th Tuesday of each month from 10:00am to 3:00pm. Call 830-223-5018.

**Nan Netherland, Mixed Media Painters**, Fridays from 1:00pm to 4:00pm. Call 830-625-4374.

**Mary McIntosh**, Pastel, Fridays from 9:00am to 12:30pm, \$120 plus \$8 in studio fees for 4 week session monthly. Call 830-625-0132 or email [1863farmroad@sbcglobal.net](mailto:1863farmroad@sbcglobal.net).

**Lynda Medore, Jewelry**, Mondays from 1 pm to 3:30 pm. Call 830-358-0186

**Vie Dunn-Harr**, Painting and Problem Solving, in medium of choice, 1st and 3rd Wednesdays of each month from 1:00pm to 4:30pm and 6-9:30pm. \$70 plus \$4 in studio fees per month for either afternoon or evening session. Call 210-532-8036, or e-mail [vie@dunn-harrstudios.com](mailto:vie@dunn-harrstudios.com).

**Anthony A. Gonzales**, Figure and Portrait Drawing, 2nd Wednesday of each month from 1:00pm to 4:00pm. \$35 per class plus \$2 studio fee. Call 210-912-7714, or e-mail [studio@gvvc.com](mailto:studio@gvvc.com).

See [www.newbraunfelsartleague.com](http://www.newbraunfelsartleague.com) for more information on workshops or classes.

## 2014 Workshops at NBAL

**Jared Wilson**, Prismacolor Pencil Seminar, May 16-18, 2014 Skill Level: All Cost \$275

**Casey Klahn**, Pastel Workshop, March 15-17, 2014 Skill Level: All Cost \$335

### **ANGIE BANTA BROWN**

Large scale watercolor, Stilllife and Floral. July 10-12, Cost \$275 (includes studio fee) \$100 deposit  
Painting a day - Fast and Loose, oil - August 7, 8 and 9 cost \$275. (includes studio fee) \$100 deposit  
Greeting card workshop Friday - April 4, 2014 cost \$75.

### **Workshop Contact and Deposits:**

**Website** for more information:

[www.newbraunfelsartleague.com](http://www.newbraunfelsartleague.com)

### **Contact & Registration:**

Sandy Oberg, 1400 Greystone Dr., New Braunfels, TX 78132, 210-861-0751,  
email: [oberglabs@aol.com](mailto:oberglabs@aol.com)

Make checks payable to NBAL and be sure to indicate on the check which workshop you will be taking, along with a **phone number and email address.**

## **All Members**

**Read the newsletter!** Information, important to everyone, is included in each newsletter. Members need to know changes, news, and critical updates that will appear in your newsletters!

## **ATTENTION! Attention! Attention!**

All Non-displaying and Displaying Members of NBAL

This year there will be a jury day **JUST** for **current members as of Jan. 1<sup>st</sup>, 2014** on the **4<sup>th</sup> Sat. of April (April 26)**. This is your opportunity to become a displaying member, or to be juried in with another media. Look for the **NEW** forms in the docent desk notebook marked **Forms**. You will need both the **Jury Process Application (Current Member)** and the **Jury Process Information** form which shows you step by step what to do on submission day. Be sure to check out the **NEW SCORING RUBRIC** (on the form) that the judges will be using.

## Photos from Our Artist-of-the-Year Reception

### Patsy Ledbetter Artist of the Year



Susan Carlin  
Judge for  
Artist of the Year show



Applauding the judge's decision!



Artist of the  
Year show  
attendees  
waiting for  
announcement  
of Artist of the  
Year



Painting by Patsy Ledbetter



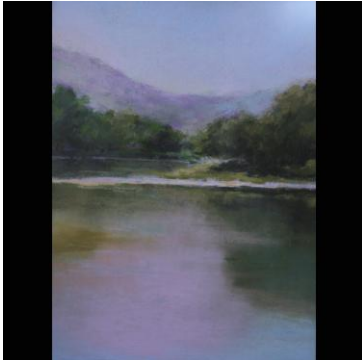
Awarding of the winner  
(no, Barbara is not asleep!)

Thanks to Jessie Slaten for these photos. If you see her at our receptions, get your picture taken!

Thanks to **Mary Hammond** for getting all **special show prospectuses**, for 2014, completed. They are in the back room. Pick one up when you need it. Hope everyone decides to enter our great shows!

### **New Teachers at NBAL**

We have 4 new classes (3 instructors), listed below. Also you can see here samples of their wonderful art work. Each month there will be samples of the art work of our current teachers. Join a class! Learn! Have fun!



Pastel Painting "Evening Solitude"  
by Mary McIntosh



Drawing by Anthony Gonzalez



Painting by Vie Dunn-Harr

### **New Classes at NBAL**

In addition to the **wonderful** classes already happening at NBAL (see page 2), the following are new classes:

#### **Mary McIntosh PASTEL CLASS**

Landscape . Seascape . Still Life . Animals

Mary McIntosh will teach 4 Fridays each month starting March 7th from 9:00am to 12:30pm in the Bower Gallery upstairs. Cost is \$120 for 4 sessions...3 hours each. Class size is limited so there will be a lot of personal instruction with emphasis on drawing skills, underpainting prior to pastel application, taking good photographs to work from, editing from nature, color theory, producing a finished gallery piece and selecting papers, pastels and subject matter for your style. I promise to share secrets and techniques with you that I have learned in lots of workshops from the pros! Call or email me at:

830 625-0132 [1863farmroad@sbcglobal.net](mailto:1863farmroad@sbcglobal.net)

**Anthony A. González**, Drawing the Figure, 2<sup>nd</sup> Wednesday of each Month, 1:00 – 4:00 pm,

Start date March 12, 2014, \$35 per class plus \$2 Studio Fee. The drawing class will consist of drawing the figure or portrait from the basic to a more finished drawing. Drawing is the essential start to all realistic art. Anthony will provide the student with the skills that will begin to meet the student's needs for a finished drawing. Website: [www.obra-de-gonzalez.com](http://www.obra-de-gonzalez.com)

Email: [studio@gvtc.com](mailto:studio@gvtc.com)

**Vie Dunn-Harr** will be teaching a mixed medium class, 1<sup>st</sup> & 3<sup>rd</sup> Wednesday Monthly, 1- 4:30pm, Start date March 5<sup>th</sup>, Cost \$70 a month - Plus \$4 Studio Fee. The goal of this class will be to help each person to recognize his or her strengths as a painter, to solve problems, to develop their individual style, and to reach a new plateau creatively. You can see Vie's work at <http://www.viedunn-harr.com>

If you have questions please contact Vie at 210-532-8036 or e-mail: [vie@dunn-harrstudios.com](mailto:vie@dunn-harrstudios.com)



## Upcoming Meetings and Events

February	March	April	May
Feb 1 Pick up unsold work from AOY show	Feb 28 Submission for "All about Color" 9 am-1 pm	April 3 pick up unsold work from "All about Color" show	May 1 pickup unsold work from "Lasting Impressions" show
Jan 31, Feb 1 Submission for "Kids have a Heart..." (closed submission)	March 7 show reception 5-8 pm	April 4 Submission for Canyon Lake's "Lasting Impressions" 9 am – 12 pm (closed submission)	May 2 submission for "Art in Bloom" 9 am – 1 pm
Feb 7 Reception for "Kids..." 5-7 pm	March 18 NBAL meetings	April 6 (Sunday) Canyon Lake show reception 1-4 pm	May 9 show reception 5-8 pm
Feb 18 NBAL meetings	April 3 pick up unsold work from show	April 15 NBAL meetings	May 20 NBAL meetings
Feb 28 Pick up "Kids..." Work			May 29 pick up unsold work from show

### Important Artist of the Month Information !!!

Anyone who participates in the Artist of the Month competition, **MUST** submit photos and bio to the newspaper editor ([kayreinke@gmail.com](mailto:kayreinke@gmail.com)) by the indicated due date or the following will be on the first page of the newsletter: **"The Artist of the Month has elected not to submit information."**

## Docent / Member Notices

### Docents-

Please make every effort to do the following:

- Call the artists after you have sold one of their pieces.
- Mark that sale in the inventory log book.
- Use the Tax Tables for taxes on sales.

### Artists-

Put "GG" on the tags for all items placed in the Gift Gallery.

**All members-** Please leave the designated parking places, next to the building in the alley, for those people who will be there all day. Also, be sure to pull up to the building and not leave a space in front of your car.

NBAL meetings are the third Tuesday of each month (except no meeting in December).

**February meeting:**

**Tues, Feb 18**

**Executive Board 10:30**

**Team Board 12:30**

**General Meeting 2:00**

## Sales Report

### Artist Sales Report for December, 2013

Status of NBAL Sales ending December 31, 2013

47 Artist had sales, Top 10 were Liz Manness, Angie Banta Brown, Barbara Blaschke, Brent McCarthy, John Reinke, Tom Bender, Walt Zettner, Bob Cook, Darryl Patrick, Gerald Jendrusch.

Congratulations to all artist who had sales. The average price was \$83.00. 98 pieces of art were sold. Thanks to all docents for the dedication and hard work.

Artist Sales	December, 2012	\$6,783	YTD Monthly Avg.	\$4,899
Artist Sales	December, 2013	<b>\$8,235</b>	YTD Monthly Avg.	\$5,547
Small Works	November 2012	\$ 230,	November & December 2012	\$1,053
Small works	December 2012	\$ 822		
Small Works	November 2013	<b>\$1,706</b>	November & December 2013	<b>\$4,034</b>
Small Works	December 2013	<b>\$2,328</b>		
Gift Gallery	December 2012	\$ 843	December 2013	\$681.

A report of the Art League balances are furnished to the board each month and are available to anyone upon request.

**NEW BRAUNFELS ART LEAGUE**

**P.O. BOX 310325**

**NEW BRAUNFELS, TEXAS 78131-0325**

**RETURN SERVICE REQUESTED**

A BIG thanks to **Flo Biggs** and her assistants, **Lynn Gabenski** and **Janet Chang**, for the hours they spend each month posting sales, writing checks, balancing bank accounts, figuring sales tax, and sending members their checks. It is an enormous job. They are so devoted to NBAL. If you see any of these members, please thank them for all their efforts!

### **Our Members Shine!**

Three NBAL members from Seguin have been juried in to show their work at the OLD BAKERY AND EMPORIUM ART GALLERY, 1006 Congress Ave, in Austin, and will be featured from Feb. 6 through March 6. They are: **Marika Bordes** - wood sculpture, **Roger Betchsler** - clay sculpture, **Carrie Davenport** - paintings. There will be a reception on Feb. 7 from 5:00 to 7:00.

**Karen Cruce** and **Kay Reinke** are now represented by Roadhouse Arts Gallery, 2355 Bulverde Road, Bulverde, TX. Grand opening will be on February 7<sup>th</sup>.

We are so sorry that **Mary Johnson** will no longer be giving classes. The entire art league, and especially her many students, want her to know how much they appreciate both her contributions to the art league and her friendship.