

# New Braunfels Art League

**Editor: Kay Reinke** [kayreinke@gmail.com](mailto:kayreinke@gmail.com)

**September, 2013**

239 W. San Antonio St.  
New Braunfels, TX 78130  
830-629-8022

**Website:**

[www.newbraunfelsartleague.com](http://www.newbraunfelsartleague.com)

## **NBAL 2013 Board**

**President** -- Barbara Blaschke

**1st Vice President** -- Tom  
Bender

**2nd Vice President** -- Carol  
Erwin

**Treasurer** -- Flo Biggs

**Asst. Treasurer** -- Warren  
Nogle

**Secretary** -- Bette Holley

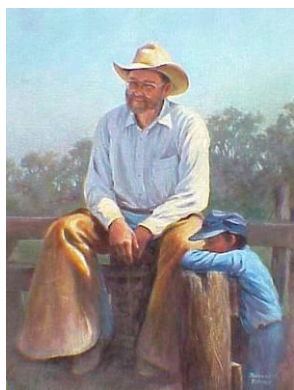
**Parliamentarian** -- Angie  
Banta Brown

**Past President** -- Robin  
Roberts Walker

**President Emeritus** -- Elaine  
Felder

## **Members!**

If you are not reading this from your computer, you are missing out on pages 3 and 4. There is much information and news on those two pages! Everything is in color, including photos!



## **Patricia Anne McCoy Artist of the Month**

Patricia Anne McCoy graduated from Lamar University in Beaumont, TX in the early 60's with a BS in commercial art. She then attended art workshops, beginning with the Glassell School of Art in Houston, TX, then a two year post-graduate course in interior design, which fits right in with art. Born in California and moved with her parents to the Texas panhandle at age nine, Anne's only concession to going to Texas was the purchase of a horse, a red and white Pinto. This started a lifelong love for horses and cattle which is expressed in many of Anne's paintings.

A versatile artist, Anne has won awards for her pen and ink drawings, watercolors, oils and pastels. Her works range from abstract to expressionism to realism and her subjects include animals, flowers, landscapes and portraits. Anne has organized and attended numerous art workshops including John Carter watercolor, Frank Covino portraits, Ken Hoesmer watercolor, Bob Rohm pastel, Ann Templeton and Vi Dunn-Harr oils and several others.

Anne is currently teaching watercolor and oil classes, organizing trips for Plein Air painting, and serving as an art consultant for her interior design clients.  
Cell- (830) 660-4718 Home- (830) 629-6836



## **Bernice Brown**

**Demo for September Meeting  
Tuesday September 17**

Since most of Bernice's formal training has been in Portraiture, she is known for capturing the personality of her subjects in a profound way. Also appreciating the beauty of landscapes and still life, she enjoys portraying the magic of light and color in the seasonal changes. Her commissioned portraits include Dwight D. Eisenhower and Robert E. Lee (in schools named for them), Red Adair -oil well firefighter, Don Williams - Country Western Singer, Ministers and University Professors, as well as many families, children and their pets. A wide variety of subjects! Brown's paintings have been included by invitation into four Exhibits at the Cowboy Artists of America Museum. Having won many awards, her work is deeply influenced by Teacher/Mentors: Howard Terpning, Harley Brown, Everett Raymond Kinstler, Robert K. Abbett, Dan Gerhartz, Grant Speed, Bob Wygant, and others. Member of Portrait Society of America, Bernice is also proficient in other subject matter and is a popular teacher/lecturer and author/illustrator of children's books. Bernice Brown is also part of Wimberley Fine Arts Center, a Co-Operative Gallery.

## Classes at NBAL

**Angie Banta Brown, Watercolor**, Wednesdays from 9:00am to 12:00pm. **Oil Painting**, Thursdays, from 9:00am to 1:00pm. Call 830-609-2581.

**Mary Johnson, Pastel & Oil, Live Models**, Wednesdays from 1:00pm to 4:00pm. Call 210-618-8321.

**Linda C. Jacobson, Children's Art Classes** (ages 5 -13), in painting, drawing and other mediums, Call 830-624-5302 or visit online at [www.casadelinda.com](http://www.casadelinda.com) for a complete schedule.

**Anne McCoy, Watercolor**, Mondays from 6:00pm to 8:30pm Call 830-629-6836.

**Julie McCollum, Experimental Painting**, 4th Tuesday of each month from 10:00am to 3:00pm. Call 830-223-5018.

**Leila Reynolds, Painting on Silk**. Second Tuesday of each month from 10 am to 3pm. Supplies for student's first class will be provided. Call (830) 643-1372

**Lynda Medore, Jewelry**, Mondays from 1 pm to 3:30 pm. Call 830-358-0186

**Sherry Wooley, Oil Painting**, Tuesdays from 5:30 pm to 8:30 pm, Call 830-964-2808

See [www.newbraunfelsartleague.com](http://www.newbraunfelsartleague.com) for more information on workshops or classes.

## 2013 Workshops at NBAL

**Vie Dunn-Harr, Watercolor Collage Workshop**  
September 13-15, 2013 Skill Level: All Cost \$335

**Leila Reynolds, It "Felt" Good, Wet, Nuno & Needle**,  
September 28 & 29; Skill Level: Beginner-Intermediate  
Cost \$195.00

**Myra Knapp, Plein Air in Oil**, October 11 - 13,  
Skill Level: All Cost \$230.00

**Angie Banta Brown, Christmas Cards**, November 1  
Skill Level: All Cost \$75.00

### Workshop Contact and Deposits:

**Website** for more information:  
[newbraunfelsartleague.com](http://newbraunfelsartleague.com)

### Contact & Registration:

Pauline Fay at 210-653-1414 or

Email [neepwinn@sbcglobal.net](mailto:neepwinn@sbcglobal.net)

Make checks payable to NBAL and be sure to indicate on the check which workshop you will be taking, along with a **phone number and email address**.

### Art image wanted for 2014 NBAL Donation Project:

Each year the Art League selects a two-dimensional art image to make prints to donate to organizations for charity events. We are in the process of selecting an art image for 2014 donation project. Please submit your artwork image to be juried in a competition for this project. A print of the winning entry will be given to organizations who ask for an art donation from the Art League during 2014. A print will also be given to the winning artist. The winning artist will take the responsibility to conduct the contest in the fall of 2014 and to distribute the art donation for the following year (2015).

This competition is open to all NBAL members in all styles of two-dimensional work. Each artist is allowed one entry. All artwork should be submitted in digital file by E-mail. Images should be submitted in .jpg format, RGB color, no larger than 300dpi, and 800x1200 pixels in either dimension. **Deadline for entries is November 8, 2013.** Your submission should include your name, E-mail address, and phone # with a digital file of artwork including title, dimensions, year completed and medium. E-mail your submission to Janet Chang at [jchang3@satx.rr.com](mailto:jchang3@satx.rr.com) before November 8, 2013. The winning artist will be announced in our General Meeting in January 2014.

### Election Results

The resignation of Nancy Bower from the office of President necessitated an election. Barbara Blaschke, who held the office of 1<sup>st</sup> Vice President has been elected President and Tom Bender has been elected 1<sup>st</sup> Vice President. Thanks to both of them for stepping up to the jobs this late in the year. They are also on the slate of officers for the Nov election.

**Christus Santa Rosa**  
**Community Outreach**  
**Show – June/August**

The watercolor show at Christus Santa Rosa was juried on June 7. There were 27 entries and the hospital jury team chose 16 wonderful paintings to display for the months of June, July, and August. Members showing their artwork are: Madge Bayston, Denise Beard, JoAnn Beissner, Maribel Crockett, Gina Cumberland, Pat Deltz, Pauline Fay, Bette Holley, Jim Kamprath, and Kathy Perales. Congrats to everyone!

**The next show will go up in September and the medium will be pastel.**

"Everyone knows that yellow, orange, and red suggest ideas of joy and plenty. I can paint you the skin of Venus with mud, provided you let me surround it as I will." -- Eugene Delacroix

"What a horrible thing yellow is." -- Edgar Degas

**YELLOW AROUND THE GLOBE**

The Chinese have placed a predominance on the color yellow not seen elsewhere in the world. It was the color of emperors during both the Ming dynasty and the Qing dynasty.

In India, yellow is the color of the Vaisya caste, or farmers, and is the color Hindus wear to celebrate the Festival of Spring.

During the tenth century in France, the doors of traitors and criminals were painted yellow.

During the 1357 Japanese "War of Dynasty," warriors wore a yellow chrysanthemum as a pledge of courage.

In Aztec culture, yellow symbolized food because it was the color of corn, the primary food of the Aztec people.

Yellow signifies "sadness" in Greece's culture and "jealousy" in France's culture.

**INTERESTING INFORMATION ABOUT YELLOW**

Yellow is psychologically the happiest color in the color spectrum.

In medical terms, a yellow flag indicates a quarantine.

Yellow Stones: Amber, Calcite, Cat's Eye, Citrine, Fluorite, Golden Beryl, Golden Yellow Topaz, Golden Tiger Eye, Iron Pyrite, Lemon Chrysoprase, Yellow Celestite, Yellow Danburite, Yellow Garnet, Yellow Jade, Yellow Jasper, Yellow Kunzite, Yellow Muscovite, Yellow Rhodonite, Yellow Sapphire, Yellow Tourmaline

The comic book character Green Lantern was afraid of the color yellow.

75% of the pencils sold in the United States are painted yellow. Why? Be sure to read the answer in next month's newsletter to find out!

**POPULAR PHRASES THAT INCLUDE YELLOW**

Yellowbellied: a cowardly manner

Yellow fever: a disease involving high fever and jaundice that is common in the tropics

Yellow jack: a flag flown on a vessel to show that it is under quarantine

Yellow dog contract: a contract which denies a person the right to join a worker's union

Yellow journalism: newspaper articles thought to be sensationalized in order to sell more papers

**Special rules for Artoberfest Special Show. Be sure to read prospectus carefully!**

**The Prospectus for Artoberfest is attached to this email. There are 6 categories for entries for this show:**

- |                       |                       |
|-----------------------|-----------------------|
| (1) Oil/Acrylic       | (4) Pastel / Drawings |
| (2) Water Media       | (5) Photography       |
| (3) Sculpture/Pottery | (6) All Others.       |

**Tell your artist friends. They do not have to be members to enter!**

**DON'T FORGET!**

Artist Space Available There will be a Studio available in the Art League, effective October 1, 2014. Please give your name to Flo Biggs at [jmbiggs@gvvc.com](mailto:jmbiggs@gvvc.com) if you want to be in the drawing, to be held at the September General Meeting. Good luck.

## September 21

Come to **Hill Country Art Festival** in Comfort Texas (formerly Comfort Art Walk). Artists set up in shops, restaurants and wineries. Demonstrations. For more information: Contact: [www.ComfortChamberofcommerce.com](http://www.ComfortChamberofcommerce.com)

### Opportunities

<b>Title</b>	<a href="#">FALL PHOTOGRAPHY &amp; SCULPTURE EXHIBIT 2013</a>	<b>Title</b>	<a href="#">Call for Entry: National: Craft Artists</a>
<b>Organization</b>	Round Rock Arts	<b>Organization</b>	Greater Denton Arts Council
<b>Location</b>	Round Rock, TX	<b>Location</b>	Denton, Texas
<b>Website</b>	<a href="http://www.roundrockarts.org">http://www.roundrockarts.org</a>	<b>Website</b>	<a href="http://www.dentonarts.com/">http://www.dentonarts.com/</a>
<b>Closing Date</b>	Friday, October 4, 2013	<b>Closing Date</b>	Friday, September 6, 2013

<b>Title</b>	<a href="#">Dave Bown Projects – 7th Semiannual Competition</a>
<b>Organization</b>	Dave Bown Projects
<b>Location</b>	San Antonio, TX
<b>Website</b>	<a href="http://www.davebownprojects.com/submissions.html">http://www.davebownprojects.com/submissions.html</a>
<b>Closing Date</b>	Saturday, November 30, 2013

## Painting Water Part IV

### Understanding the Shapes & Angles Reflected in the Water:

Some painters paint the reflected image as an exact, mirrored image of direct object. The realistic landscape painting requires a more accurate representation of what your eyes actually see. When viewing a scene of reflections in water, you are seeing the actual objects in the scene and their reflected images from two different viewing angles. Of course, the reflected image you see in the water bounces off the surface of the water.

However, you see the reflected scene from an angle of view as far below the surface of the water as your eyes are above the water. This means you see more of the undersides of reflected objects and may even see reflected objects that you cannot see at all when you look directly at the objects.



Looking at this seagull, notice how the reflection is NOT a mirrored image of the subject. The reflection shows much more of the underside of the bird rather than the side view. Also, notice how the white of the gull is darker in the reflection and the darks are a bit lighter.

Read more: <http://www.finearttips.com/2010/06/tips-for-painting-water-and-reflection/#ixzz2SEfXQMRJ>

A **big thanks** to **Nancy and Paul Bower**! You two have done so much (and continue to do so much) for NBAL! Although Nancy has resigned from the office of President, she is still very involved and loves being around the members. She is very visible on submission days and is so valuable in making those days run smoothly. If you see Nancy and/or Paul, please give them a word of thanks for the incredibly gorgeous desk in the gallery. In addition, they have made other tables for the gallery! Stop by to see them. Gorgeous! What awesome additions to our gallery.

See officer Election Information on page 5

## Upcoming Meetings and Events

September	October	November	December
"For the Love of Animals" Show	Artoberfest sponsored by HE	Nov 13 Artoberfest ends	No NBAL meeting in December
<b>*Sept 3 Submission 9 am-1 pm</b>	Oct 1 submission 10 am – 3 pm	Nov 14 pick up unsold work from Artoberfest	
Sept 6 Reception 5-8 pm	Oct 2 judging 9 am-1 pm	Nov 19 NBAL meeting election of officers	Dec 29 Artoberfest ends ends
Sept 17 NBAL meeting	Pick up works not accepted 3 pm – 5 pm	"Small Works..." show	Dec 30 Pick up unsold art
Sept 29 Show ends	Oct 4 reception 5-8 pm	Nov 15 Submission 9am-1pm	
Sept 30 pick up unsold art	Oct 15 NBAL meetings	<b>Nov 17 Reception 2-4 pm</b> <b>Note new date and time</b>	
<b>*Change in date</b>			

### Election Information- List of Officers To Be Voted On by Membership at November Meeting

President: Barbara Blaschke, 1st Vice President: Tom Bender, 2nd Vice President: Mary K. Hammond, Treasurer: Flora W. (Flo) Biggs, Asst. Treasurer: Lynn Gabenski, Secretary: Arlene D. Rhodes, Parliamentarian: Vickie Smith Nominations accepted from floor.

## Docent / Member Notices

*Hope everyone is thinking about putting artwork in the **Artoberfest** show, October through the middle of November! There are 6 categories for this show. **Also, be aware that the artwork cannot ever have been in our gallery at all. It is exciting to see everyone's new work! Submission day October 1, 10 am-3 pm. Non-members may enter this show.***

**NBAL meetings are the third Tuesday of each month (except no meeting in December).  
September meeting:  
Tues, Sept 17  
Executive Board 10:30  
Team Board 12:30  
General Meeting 2:00**

There were 8 entries for Artist of the Month at the Pot Luck Dinner. Allowing all members to enter seems to have helped increase the numbers. Keep it up all you great artists!

**Thanks to Flo Biggs and her helpers for posting sales, writing checks, paying sales tax and the many other things for members to get paid!**

## Sales Report

### Artist Sales Report for July 2013

36 Artist had sales, the top 11 sellers are Trace Guthrie, Carolyn Pittman, Kay Reinke, Tom Bender, Sandra Wait, Denise Beard, Barbara Blaschke, Kathy Rigdon, Betty Munie and Dell Bayer tied with Pam Pohl for 10<sup>th</sup> place. Congratulations to all who had sales.

The average price was \$99.00 with 67 pieces of art that sold. Thanks to all docents for the dedication and hard work.

Status of NBAL Sales ending July 31, 2013

Artist Sales July 2012 \$7,233  
YTD Monthly Avg. \$4,474

Artist Sales July 2013 \$7,021  
YTD Monthly Avg. **\$5,359**

A detailed report of the Art League balances are furnished to the board each month and are available to anyone upon request.

**NEW BRAUNFELS ART LEAGUE**

**P.O. BOX 310325**

**NEW BRAUNFELS, TEXAS 78131-0325**

**RETURN SERVICE REQUESTED**

### **News from your NBAL LIBRARY**

Dog Days of Summer getting you down? Out of inspiration? Just want to sit with a good book? WELL THEN, get yourself upstairs to your NBAL Library, unlock the door and enjoy all of those free and inspiring resources. NEWS: Now you have access to the DVD library available in a glass case. Added to our collection are some great DVD's by artists Scott Christensen; Peggy Kroll-Roberts; Kathryn Stats; Frank Serrano; Kevin Macpherson and three DVD's on fine silver jewelry making. Check out time for DVD's is two weeks and you can return them in the book drop near the elevator upstairs. The keys are always available at the front desk - get them and open a whole new world for yourself!. Enjoy!

### **Important Message to Docents!**

When you make a sale, please remember:

1. Get the buyer's name and address
2. Attach the artist's card to sales slip (it goes back to artist)
3. Call the artist to inform him or her of the sale.
4. Indicate on artist's gallery inventory sheet that it was sold.

Thanks!

\*\*\*\*\*

### **Displaying Members/Docents**

NBAL has a "Gallery Appearance Team Leader" whose job it is to maintain the front of the gallery next to the demonstration area. She also decides, according to previously determined guidelines, what to display there. When you bring work to the gallery, please do not hang it in that area. Thank you.

**Artist Space Available** There will be a Studio available in the Art League, effective October 1, 2014. Please give your name to **Flo Biggs**, [jmbiggs@gvtc.com](mailto:jmbiggs@gvtc.com), if you want to be in the drawing, to be held at the September General Meeting. Good luck.